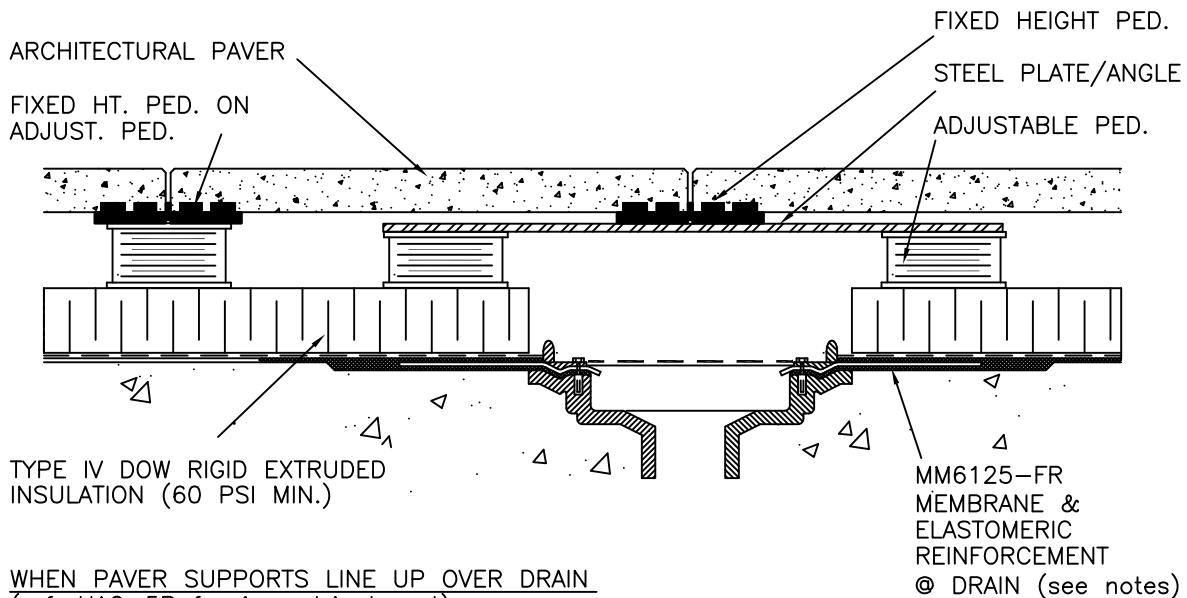


WHEN PAVER SUPPORTS CAN BE PLACED AROUND THE DRAIN



WHEN PAVER SUPPORTS LINE UP OVER DRAIN  
(ref. UAC-5B for isometric layout)

NOTES: TYPE IV DOW RIGID EXTRUDED INSULATION MUST BE 60 PSI (414 kPa) (COMPRESSIVE STRENGTH) BOARD MINIMUM.

VARIOUS ADJUSTABLE PEDESTAL SYSTEMS ARE AVAILABLE, ALLOWING HEIGHT ADJUSTMENTS >50 mm SOME HAVE INTEGRAL JOINT SPACERS, ELIMINATING THE NEED FOR FIXED HEIGHT PEDESTALS ON TOP.

ADJUSTMENTS FOR SLOPE CAN BE MADE IN A NUMBER OF WAYS DEPENDING UPON THE ADJUSTABLE PEDESTAL SYSTEM USED. SHIMS ARE USED FOR MINOR LEVEL ADJUSTMENTS.

REFER TO APPLICABLE MM6125-FR ROOFING OR WATERPROOFING GUIDELINE DETAILS FOR PROPER MEMBRANE/FLASHING DETAILS AND ALTERNATIVES.



PLAZA DECK  
ASSEMBLY  
ARCHITECTURAL PAVER

INSTALLATION DETAIL  
AT DRAINS

HYDROTECH MEMBRANE CORP.

NO SCALE

UAC-5A