

This information is intended only for general conceptual purposes. It is based on data and knowledge considered to be true and correct. It is offered for the user's consideration, investigation and verification and is not intended to substitute for the advice provided by appropriate professionals. Hydrotech assumes no liability for the use of this information. The determination of the suitability and applicability of this information is the sole responsibility of the user.



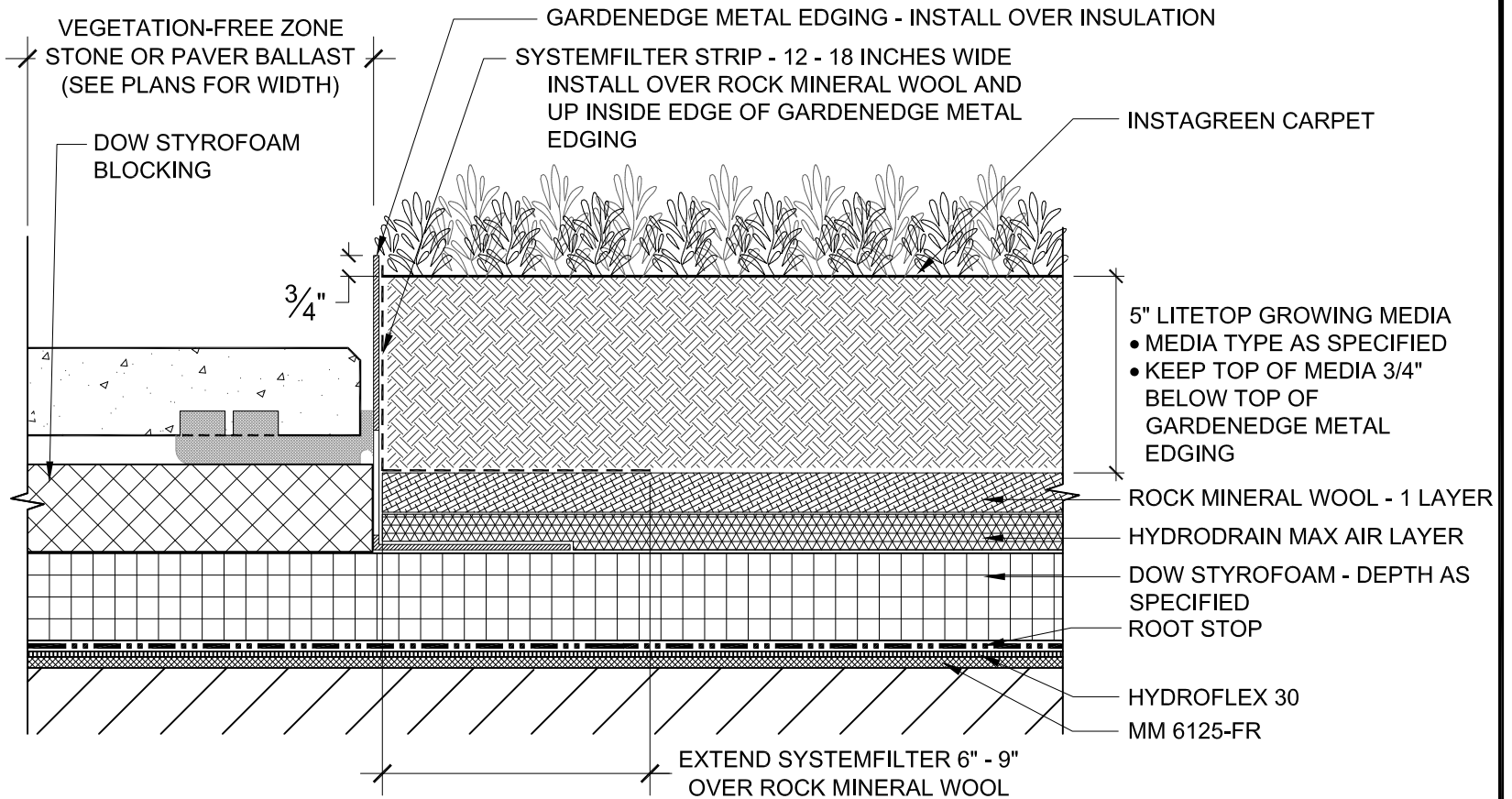
**GARDEN
ROOF
ASSEMBLY**

AMERICAN HYDROTECH, INC.

**GARDEN ROOF® 5 + 1
ROCK MINERAL WOOL ASSEMBLY**

SCALE: NONE
DATE: 10/15/18

GW-6C



NOTES:

1. INSTAGREEN CARPET IS RECOMMENDED BY HYDROTECH IN ROCK MINERAL WOOL ASSEMBLIES. OTHER VEGETATION OPTIONS ARE AVAILABLE.
2. ANYWHERE ROCK MINERAL WOOL IS USED, HYDRODRAIN MAX MUST BE USED TO PROVIDE DRAINAGE.
3. ROOT STOP IS LOOSE-LAID OVER THE HYDROFLEX 30 AND LAPPED A MINIMUM OF 5 FEET OR 2-1/2 FEET WITH LAPS TAPED USING ROOT STOP TAPE.
4. THE VEGETATION FREE ZONE (VFZ) MAY BE COMPOSED OF TYPICAL STONE BALLAST OR CONCRETE PAVERS. CONTACT HYDROTECH FOR BALLAST DESIGN REQUIREMENTS. VFZs ARE REQUIRED AT ALL ROOF PERIMETERS AND ALL PENETRATIONS (PIPES, SKYLIGHTS, ETC.). GARDENEDGE METAL EDGE RESTRAINT, CONCRETE CURBS, LANDSCAPE TIMBERS, ETC. MAY BE USED AT VFZ/GROWING MEDIA TRANSITIONS.
5. CONTACT HYDROTECH FOR VEGETATION FREE ZONE WIDTH AND MATERIAL REQUIREMENTS FOR WIND WARRANTY.
6. CONTACT HYDROTECH FOR TEST RESULTS FOR LITETOP MEDIA AND ROCK MINERAL WOOL.